

**PANTHER LS8E**

**NEW!**

# **PANTHER™ LS8E Hand-Held Thermal Transfer Printer and Accessories**

The versatile *PANTHER™* LS8E Hand-Held Thermal Transfer Printer with label cut-to-length functionality eliminates label waste and label trimming labor. A partial cut feature is available to provide tear-apart strips of labels for quicker installation.

The *PANTHER™* LS8E Hand-Held Thermal Transfer Printer prints high quality, industrial labels on a wide variety of materials for electrical and network applications such as wire/cable, components, safety, and facility identification. The printer uses label cassettes that contain an integrated memory device for automatic formatting, recall of last legend used, and number of labels remaining in cassette. The fast loading label cassettes include both label material and ribbon to make changing labels easy.

The compact and rugged *PANTHER™* LS8E is easy to use and fits comfortably in one hand. The large, backlit display makes the *PANTHER™* LS8E the ideal tool for printing labels at a remote job site. USB interface for importing data, system upgrades, and printing labels from a wireless laptop or desktop computer.



## **Key Features**

## **Benefits**

|   |  |
|---|--|
| <b>Label cut-to-length functionality</b>  | Eliminates label waste and label trimming labor  |
| <b>Unique cutter design allows full or partial label cutting</b>                                      | Flexibility to choose individually cut labels or a strip of tear-apart labels for quicker installation   |
| <b>Cassettes with automatic label recognition</b>   | Label cassettes contain an integrated memory device for automatic formatting, recall of last legend used, and number of labels remaining in cassette     |
| <b>Market specific labeling tools</b>   | Simplify label creation for network components, panel building, and construction and maintenance   |
| <b>USB interface</b>  | Allows importing data, system upgrades, and printing labels from a wireless laptop or desktop computer   |
| <b>Print self-laminating labels, heat shrink tubing, die-cut component labels and continuous tape</b> | One printer for all labeling applications<br>Printed labels withstand harsh operating conditions including abrasion, chemicals, and temperature exposure |
| <b>Fast loading label cassette</b>  | Contains both label material and ribbon to make changing labels easy   |
| <b>Large graphic display with backlight</b>   | Maximize label design area with backlight for improved visibility  |
| <b>Compact, rugged design</b>   | Easy to use and fits comfortably in one hand   |
| <b>Crisp thermal transfer print</b>   | High quality print enhances label appearance   |

**Ordering Information – Printer and Accessories**



**LS8E-KIT**



**LS8E**

| Part Number | Part Description   | Std. Pkg. Qty. |
|-------------|--|----------------|
| LS8E-KIT    | Includes LS8E printer, one cassette of S100X150VAC self-laminating labels, six AA alkaline batteries, LS8-CASE, LS8-PCKIT, LS8-IB, LS8-WS, quick reference card and operator's manual. | 1              |
| LS8E        | Includes LS8E printer, one cassette of S100X150VAC self-laminating labels, six AA alkaline batteries and quick reference card.   | 1              |
| LS8E-ACS*   | 120 VAC power adapter for North America.   | 1              |
| LS8-CASE    | Rigid carrying case.   | 1              |
| LS8-PCKIT   | Includes USB cable and PC interface software for importing data, system upgrades, or printing from a wireless laptop or desktop computer.  | 1              |
| LS8-IB      | Protective impact bumper.  | 1              |
| LS8-WS      | Wrist strap.   | 1              |
| LS8-CLN     | Cleaning kit.  | 1              |

\*Cannot be used to charge batteries.  
Other adapters available, replace S with A (Australia), C (China), E (Europe) and U (UK).

**PC Interface**

Connect the PANTHER™ LS8E printer to a wireless laptop or desktop computer for importing data, system upgrades, and printing labels.



**USB compatible**

- Download and print label files from MICROSOFT EXCEL^
- Archive label files on a computer for later use or sharing
- Install LS8E operating system upgrades
- Print labels directly from PANDUIT® EASY-MARK™ Labeling Software
- LS8-PCKIT includes a USB cable and CD-ROM with software and operator's manual

^EXCEL is a registered trademark of Microsoft Corporation in the United States and/or other countries.

**Label Design Flexibility**

- Label cut-to-length functionality eliminates label waste and label trimming labor
- Partial cut feature available to provide tear-apart strips of labels
- Large graphic display with backlight for improved visibility
- User interface available in English, French, German, Italian, Spanish and Portuguese
- Market specific labeling tools simplify label creation for network components, panel building, and construction and maintenance
- Customize your labels with these advanced features:
  - Alpha and numeric serialization
  - Bar codes
  - Symbols
  - Date and time stamp
  - Lines
  - Frames
  - Data lists



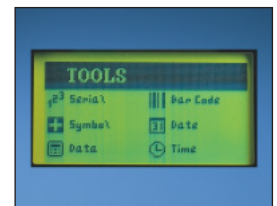
**Cut-to-Length Labels**



**Partial cut strip of labels**

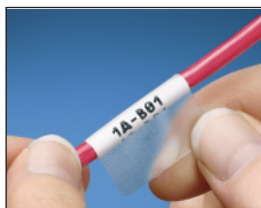


**Graphic display with backlight**



**Customize labels with advanced features**

Self-Laminating Label Cassettes



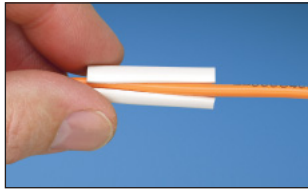
- P1™ Label Cassette contains an integrated memory device for automatic formatting, recall of last legend used, and number of labels remaining in the cassette
- Fast loading label cassette includes both label material and ribbon to make changing labels easy
- Self-laminating adhesive labels for wire/cable identification include a colored print-on area and clear overlamine

| Part Number  | Part Description  | Width |       | Length |        | Print-On Height |       | Min. Cable O.D. |       | Max. Cable O.D. |       | Std. Pkg. Qty. | Std. Ctn. Qty. |
|--------------|---|-------|-------|--------|--------|-----------------|-------|-----------------|-------|-----------------|-------|----------------|----------------|
|              |   | In.   | mm    | In.    | mm     | In.             | mm    | In.             | mm    | In.             | mm    |                |                |
| S050X075VAC  | White print-on area, vinyl label for 18 – 14 AWG wires, 450/cassette.     | .50   | 12.70 | .75    | 19.05  | .25             | 6.35  | .08             | 2.02  | .16             | 4.04  | 1              | 10             |
| S050X125VAC  | White print-on area, vinyl label for 12 – 10 AWG wires, 225/cassette.     | .50   | 12.70 | 1.25   | 31.75  | .38             | 9.65  | .12             | 3.07  | .28             | 7.03  | 1              | 10             |
| S050X150VAC  | White print-on area, vinyl label for Cat. 5e/Cat. 6 cables, 200/cassette. | .50   | 12.70 | 1.50   | 38.10  | .50             | 12.70 | .16             | 4.04  | .32             | 8.09  | 1              | 10             |
| S075X075VAC  | White print-on area, vinyl label for 18 – 14 AWG wires, 350/cassette.     | .75   | 19.05 | .75    | 19.05  | .25             | 6.35  | .08             | 2.02  | .16             | 4.04  | 1              | 10             |
| S075X100VAC  | White print-on area, vinyl label for 12 – 10 AWG wires, 275/cassette.     | .75   | 19.05 | 1.00   | 25.40  | .38             | 9.65  | .12             | 3.05  | .20             | 5.08  | 1              | 10             |
| S075X125VAC  | White print-on area, vinyl label for 12 – 10 AWG wires, 225/cassette.     | .75   | 19.05 | 1.25   | 31.75  | .38             | 9.65  | .12             | 3.07  | .28             | 7.03  | 1              | 10             |
| S075X150VAC  | White print-on area, vinyl label for Cat. 5e/Cat. 6 cables, 200/cassette. | .75   | 19.05 | 1.50   | 38.10  | .50             | 12.70 | .16             | 4.04  | .32             | 8.09  | 1              | 10             |
| S100X075VAC  | White print-on area, vinyl label for 18 – 14 AWG wires, 350/cassette.     | 1.00  | 25.40 | .75    | 19.05  | .25             | 6.35  | .08             | 2.02  | .16             | 4.04  | 1              | 10             |
| S100X125VAC  | White print-on area, vinyl label for 12 – 10 AWG wires, 225/cassette.     | 1.00  | 25.40 | 1.25   | 31.75  | .38             | 9.65  | .12             | 3.07  | .28             | 7.03  | 1              | 10             |
| S100X150VAC‡ | White print-on area, vinyl label for Cat. 5e/Cat. 6 cables, 200/cassette. | 1.00  | 25.40 | 1.50   | 38.10  | .50             | 12.70 | .16             | 4.04  | .32             | 8.09  | 1              | 10             |
| S100X225VAC‡ | White print-on area, vinyl label for 8 – 4 AWG wires, 125/cassette.       | 1.00  | 25.40 | 2.25   | 57.15  | .75             | 19.05 | .24             | 6.06  | .48             | 12.19 | 1              | 10             |
| S100X400VAC  | White print-on area, vinyl label for 2 – 1 AWG wires, 75/cassette.        | 1.00  | 25.40 | 4.00   | 101.60 | 1.00            | 25.40 | .32             | 8.09  | .95             | 24.26 | 1              | 10             |
| S100X650VAC  | White print-on area, vinyl label for 1/0-250 MCM wires, 50/cassette.      | 1.00  | 25.40 | 6.50   | 165.10 | 1.50            | 38.10 | .48             | 12.19 | 1.59            | 40.39 | 1              | 10             |

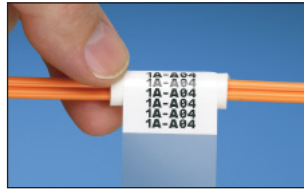
‡Other colors available, replace A with B (Blue), D (Green), H (Red) and I (Yellow).  
Order number of cassettes required.

## LABELCORE™ Fiber Optic Cable Identification System

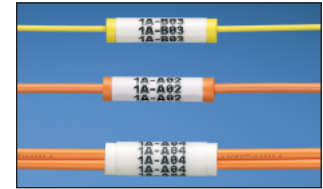
- Provides a larger labeling surface on small fiber cables and allows legends to be clearly seen
- Sleeve is made of flexible PVC material
- Locate sleeve on straight section of cable at least 2 inches from fiber boot



Apply LABELCORE™ sleeve to cable



Wrap self-laminating label around LABELCORE™ sleeve



LABELCORE™ sleeves labeled and installed

| Part Number | Description   | Std. Pkg. Qty. | Std. Ctn. Qty. |
|-------------|---|----------------|----------------|
| NWSLC-2Y    | Yellow, cable identification sleeve, 2mm simplex cable.     | 100            | 1000           |
| NWSLC-3Y    | Orange, cable identification sleeve, 3mm simplex cable.     | 100            | 1000           |
| NWSLC-7Y    | White, cable identification sleeve, 3mm duplex fiber cable. | 100            | 1000           |

Order number of sleeves required.

## Self-Laminating Label Cassettes for Use with LABELCORE™ Fiber Optic Cable Identification System

| Part Number | Description   | Width |       | Length |       | Print-On Height |       | Min. Cable O.D. |       | Max. Cable O.D. |       | Std. Pkg. Qty. | Std. Ctn. Qty. |
|-------------|---|-------|-------|--------|-------|-----------------|-------|-----------------|-------|-----------------|-------|----------------|----------------|
|             |   | In.   | mm    | In.    | mm    | In.             | mm    | In.             | mm    | In.             | mm    |                |                |
| S100X160VAC | White print-on, self-laminating vinyl label 175/cassette. For use with NWSLC-2Y and NWSLC-3Y. | 1.00  | 25.40 | 1.60   | 40.64 | .80             | 20.32 | .25             | 6.35  | .25             | 6.35  | 1              | 10             |
| S100X220VAC | White print-on, self-laminating vinyl label 125/cassette. For use with NWSLC-7Y.              | 1.00  | 25.40 | 2.20   | 55.88 | 1.10            | 27.94 | .48             | 12.19 | .48             | 12.19 | 1              | 10             |

Order number of cassettes required.

## Non-Laminated Label Cassettes



- P1™ Label Cassette contains an integrated memory device for automatic formatting, recall of last legend used, and number of labels remaining in the cassette
- Fast loading label cassette includes both label material and ribbon to make changing labels easy
- Perforated labels can be used as full-size or half-size markers
- Non-laminated adhesive labels for wire/cable identification

| Part Number | Part Description | Height |    | Length |   | Std. Pkg. Qty. | Std. Ctn. Qty. |
|-------------|------------------|--------|----|--------|---|----------------|----------------|
|             |                  | In.    | mm | Ft.    | m |                |                |

### Continuous

|                |                          |      |       |      |     |   |    |
|----------------|--------------------------|------|-------|------|-----|---|----|
| T050X000CBC-BK | White, vinyl cloth tape. | .50  | 12.70 | 12.5 | 3.8 | 1 | 10 |
| T100X000CBC-BK | White, vinyl cloth tape. | 1.00 | 25.40 | 12.5 | 3.8 | 1 | 10 |

| Part Number | Part Description | Width |    | Length |    | Min. Cable O.D. |    | Max. Cable O.D. |    | Std. Pkg. Qty. | Std. Ctn. Qty. |
|-------------|------------------|-------|----|--------|----|-----------------|----|-----------------|----|----------------|----------------|
|             |                  | In.   | mm | In.    | mm | In.             | mm | In.             | mm |                |                |

### Die-Cut

|             |  |      |       |      |       |     |       |      |       |   |    |
|-------------|--|------|-------|------|-------|-----|-------|------|-------|---|----|
| N050X075CBC | White, perforated vinyl cloth label for 18 – 14 AWG wires, 125/cassette.           | .50  | 12.70 | .75  | 19.05 | .24 | 6.10  | .51  | 12.95 | 1 | 10 |
| N050X150CBC | White, perforated vinyl cloth label for Category 5e/Category 6 cable, 75/cassette. | .50  | 12.70 | 1.50 | 38.10 | .48 | 12.19 | 1.02 | 25.91 | 1 | 10 |
| N100X125CBC | White, perforated vinyl cloth label for 12 – 10 AWG wires, 75/cassette.            | 1.00 | 25.40 | 1.25 | 31.75 | .40 | 10.16 | .85  | 21.59 | 1 | 10 |
| N100X150CBC | White, vinyl cloth label for Category 5e/Category 6 cable, 75/cassette.            | 1.00 | 25.40 | 1.50 | 38.10 | .48 | 12.19 | 1.02 | 25.91 | 1 | 10 |
| N100X175CBC | White, perforated vinyl cloth label for 8 – 4 AWG wires, 50/cassette.              | 1.00 | 25.40 | 1.75 | 44.45 | .56 | 14.22 | 1.19 | 30.23 | 1 | 10 |

Order number of cassettes required.

Heat Shrink Label Cassettes



- P1™ Label Cassette contains an integrated memory device for automatic formatting, recall of last legend used, and number of labels remaining in the cassette
- Fast loading label cassette includes both label material and ribbon to make changing labels easy
- Meets print performance requirements of MIL-M-81531 and MIL-STD-202F Method 215A, Solution A, C, and D
- Meets UL Standard 224 for flammability
- Shrink ratio 3:1
- Non-adhesive flattened heat shrinkable polyolefin for wire/cable identification

| Part Number       | Part Description   | Width |       | Length |      | Min. Cable Diameter |      | Max. Cable Diameter |       | Std. Pkg. Qty. | Std. Ctn. Qty. |
|-------------------|--|-------|-------|--------|------|---------------------|------|---------------------|-------|----------------|----------------|
|                   |  | In.   | mm    | Ft.    | m    | In.                 | mm   | In.                 | mm    |                |                |
| <b>Continuous</b> |  |       |       |        |      |                     |      |                     |       |                |                |
| H000X025H1C*      | White, 1/8" diameter heat shrinkable polyolefin, 22 – 16 AWG.  | .25   | 6.35  | 8.0    | 2.44 | .04                 | 1.02 | .13                 | 3.30  | 1              | 10             |
| H000X034H1C*      | White, 3/16" diameter heat shrinkable polyolefin, 18 – 12 AWG. | .34   | 8.64  | 8.0    | 2.44 | .06                 | 1.52 | .19                 | 4.83  | 1              | 10             |
| H000X044H1C*      | White, 1/4" diameter heat shrinkable polyolefin, 16 – 10 AWG.  | .44   | 11.18 | 6.0    | 1.83 | .08                 | 2.03 | .25                 | 6.35  | 1              | 10             |
| H000X084H1C*      | White, 1/2" diameter heat shrinkable polyolefin, 8 – 1 AWG.    | .84   | 21.34 | 6.0    | 1.83 | .17                 | 4.32 | .50                 | 12.70 | 1              | 10             |

| Part Number    | Part Description   | Width |       | Length |       | Min. Cable Diameter |      | Max. Cable Diameter |       | Std. Pkg. Qty. | Std. Ctn. Qty. |
|----------------|--|-------|-------|--------|-------|---------------------|------|---------------------|-------|----------------|----------------|
|                |  | In.   | mm    | In.    | mm    | In.                 | mm   | In.                 | mm    |                |                |
| <b>Die-Cut</b> |  |       |       |        |       |                     |      |                     |       |                |                |
| H100X025H1C*   | White, 1/8" diameter heat shrinkable polyolefin, 22 – 16 AWG, 100/cassette.  | .25   | 6.35  | 1.00   | 25.40 | .04                 | 1.02 | .13                 | 3.30  | 1              | 10             |
| H100X034H1C*   | White, 3/16" diameter heat shrinkable polyolefin, 18 – 12 AWG, 100/cassette. | .34   | 8.64  | 1.00   | 25.40 | .06                 | 1.52 | .19                 | 4.83  | 1              | 10             |
| H100X044H1C*   | White, 1/4" diameter heat shrinkable polyolefin, 16 – 10 AWG, 100/cassette.  | .44   | 11.18 | 1.00   | 25.40 | .08                 | 2.03 | .25                 | 6.35  | 1              | 10             |
| H100X084H1C*   | White, 1/2" diameter heat shrinkable polyolefin, 8 – 1 AWG, 75/cassette.     | .84   | 21.34 | 1.00   | 25.40 | .17                 | 4.32 | .50                 | 12.70 | 1              | 10             |

\*Available in yellow, replace H1C suffix with H2C.  
Order number of cassettes required.

General Component Label Cassettes



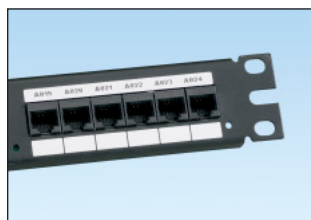
- P1™ Label Cassette contains an integrated memory device for automatic formatting, recall of last legend used, and number of labels remaining in the cassette
- Fast loading label cassette includes both label material and ribbon to make changing labels easy
- Multi-purpose labels for identifying flat surfaces such as components, control panels, circuit boards and general labeling
- Die-cut labels designed to provide maximum aesthetic quality and appearance
- Available in adhesive polyester and vinyl cloth materials

| Part Number | Part Description                        | Width |       | Height |       | Std. Pkg. Qty. | Std. Ctn. Qty. |
|-------------|---|-------|-------|--------|-------|----------------|----------------|
|             |   | In.   | mm    | In.    | mm    |                |                |
| C060X020YJC | White, polyester label, 750/cassette.   | .60   | 15.24 | .20    | 5.08  | 1              | 10             |
| C100X025YJC | White, polyester label, 500/cassette.   | 1.00  | 25.40 | .25    | 6.35  | 1              | 10             |
| C100X050CBC | White, vinyl cloth label, 175/cassette. | 1.00  | 25.40 | .50    | 12.70 | 1              | 10             |
| C100X050YJC | White, polyester label, 500/cassette.   | 1.00  | 25.40 | .50    | 12.70 | 1              | 10             |
| C100X050YMC | Silver, polyester label, 500/cassette.  | 1.00  | 25.40 | .50    | 12.70 | 1              | 10             |
| C150X075YJC | White, polyester label, 250/cassette.   | 1.50  | 38.10 | .75    | 19.05 | 1              | 10             |
| C200X050CBC | White, vinyl cloth label, 50/cassette.  | 2.00  | 50.80 | .50    | 12.70 | 1              | 10             |
| C200X050YJC | White, polyester label, 200/cassette.   | 2.00  | 50.80 | .50    | 12.70 | 1              | 10             |
| C200X100YJC | White, polyester label, 200/cassette.   | 2.00  | 50.80 | 1.00   | 25.40 | 1              | 10             |
| C200X100YMC | Silver, polyester label, 150/cassette.  | 2.00  | 50.80 | 1.00   | 25.40 | 1              | 10             |

Order number of cassettes required.

## ULTIMATE ID™ Network Label Cassette

- P1™ Label Cassette contains an integrated memory device for automatic formatting, recall of last legend used, and number of labels remaining in the cassette
- Fast loading label cassette includes both label material and ribbon to make changing labels easy
- Label cassettes designed for use with ULTIMATE ID® Faceplates, Patch Panels, Marker Ties, Modular Furniture Faceplates and Surface Mount Boxes
- Labels assist in the compliance of TIA/EIA-606-A labeling standard
- Available in non-adhesive polyester material

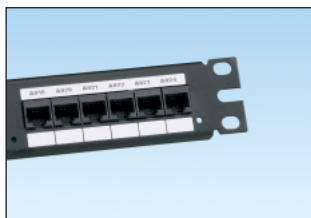


| Part Number | Description                                   | Height |     | Length |     | Std. Pkg. Qty. | Std. Ctn. Qty. |
|-------------|---|--------|-----|--------|-----|----------------|----------------|
|             |   | In.    | mm  | Ft.    | m   |                |                |
| UMLS8BW     | White, non-adhesive polyester label cassette. | .236   | 6.0 | 25.0   | 7.6 | 1              | 10             |

Order number of cassettes required.  
For complete ULTIMATE ID® Network Labeling System product information visit [www.panduit.com](http://www.panduit.com).

## Network Component Label Cassettes

- To find the suggested label solutions for a specific network component, refer to the PAN-NET® Network Solutions catalog available online at <http://www.panduit.com/ncg1> and search by network component part number using the find function
- P1™ Label Cassette contains an integrated memory device for automatic formatting, recall of last legend used, and number of labels remaining in the cassette
- Fast loading label cassette includes both label material and ribbon to make changing labels easy
- Use for identifying patch panels, faceplates, punchdown blocks and other network systems hardware
- Die-cut labels designed to provide maximum aesthetic quality and appearance
- Available in adhesive polyolefin and non-adhesive polyester materials



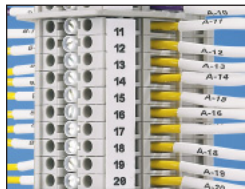
| Part Number | Part Description  | Width |        | Height |       | Std. Pkg. Qty. | Std. Ctn. Qty. |
|-------------|---|-------|--------|--------|-------|----------------|----------------|
|             |   | In.   | mm     | In.    | mm    |                |                |
| C061X030FJC | White, polyolefin label, 500/cassette, 1-port identifier.                 | .61   | 15.49  | .30    | 7.62  | 1              | 10             |
| C125X030FJC | White, polyolefin label, 200/cassette, 2-port identifier.                 | 1.25  | 31.75  | .30    | 7.62  | 1              | 10             |
| C138X019FJC | White, polyolefin label, 200/cassette, module.                            | 1.38  | 35.05  | .19    | 4.83  | 1              | 10             |
| C188X030FJC | White, polyolefin label, 150/cassette, 3-port identifier.                 | 1.88  | 47.75  | .30    | 7.62  | 1              | 10             |
| C195X040Y1C | White, non-adhesive polyester label, 100/cassette, single-gang faceplate. | 1.95  | 49.53  | .40    | 10.16 | 1              | 10             |
| C200X100FJC | White, polyolefin label, 150/cassette, SLCT.                              | 2.00  | 50.80  | 1.00   | 25.40 | 1              | 10             |
| C252X030FJC | White, polyolefin label, 125/cassette, 4-port identifier.                 | 2.52  | 64.01  | .30    | 7.62  | 1              | 10             |
| C261X030FJC | White, polyolefin label, 125/cassette, 4-port identifier.                 | 2.61  | 66.29  | .30    | 7.62  | 1              | 10             |
| C261X035Y1C | White, non-adhesive polyester label, 75/cassette, 4-port identifier.      | 2.61  | 66.29  | .35    | 8.89  | 1              | 10             |
| C282X030Y1C | White, non-adhesive polyester label, 75/cassette, 4-port identifier.      | 2.82  | 71.63  | .30    | 7.62  | 1              | 10             |
| C288X040Y1C | White, non-adhesive polyester label, 75/cassette, double-gang faceplate.  | 2.88  | 73.15  | .40    | 10.16 | 1              | 10             |
| C315X030FJC | White, polyolefin label, 100/cassette, 5-port identifier.                 | 3.15  | 80.01  | .30    | 7.62  | 1              | 10             |
| C379X030FJC | White, polyolefin label, 75/cassette, 6-port identifier.                  | 3.79  | 96.27  | .30    | 7.62  | 1              | 10             |
| C390X030Y1C | White, non-adhesive polyester label, 50/cassette, 6-port identifier.      | 3.90  | 99.06  | .30    | 7.62  | 1              | 10             |
| C750X050Y1C | White, non-adhesive polyester label, 30/cassette, 110 block.              | 7.50  | 190.50 | .50    | 12.70 | 1              | 10             |
| C788X050Y1C | White, non-adhesive polyester label, 30/cassette, GP6™ system.            | 7.88  | 200.15 | .50    | 12.70 | 1              | 10             |

Order number of cassettes required.

\*To find the suggested label solutions for a specific network component, refer to the PAN-NET® Network Solutions catalog available online at <http://www.panduit.com/ncg1> and search by network component part number using the find function.

Continuous Terminal Block Label Cassettes

- P1™ Label Cassette contains an integrated memory device for automatic formatting, recall of last legend used, and number of labels remaining in the cassette
- Fast loading label cassette includes both label material and ribbon to make changing labels easy
- Print terminal block labels ranging in size from .24 inches to .38 inches wide
- Available in continuous adhesive polyolefin tape

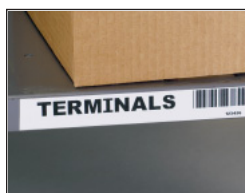


| Part Number    | Description                      | Height |      | Length |     | Std. Pkg. Qty. | Std. Ctn. Qty. |
|----------------|----------------------------------|--------|------|--------|-----|----------------|----------------|
|                |                                  | In.    | mm   | Ft.    | m   |                |                |
| T024X000FJC-BK | Black on white, polyolefin tape. | .24    | 6.10 | 25.0   | 7.6 | 1              | 10             |
| T031X000FJC-BK | Black on white, polyolefin tape. | .31    | 7.87 | 25.0   | 7.6 | 1              | 10             |
| T038X000FJC-BK | Black on white, polyolefin tape. | .38    | 9.65 | 25.0   | 7.6 | 1              | 10             |

Order number of cassettes required.

Continuous Tape Cassettes

- P1™ Label Cassette contains an integrated memory device for automatic formatting, recall of last legend used, and number of labels remaining in the cassette
- Fast loading label cassette includes both label material and ribbon to make changing labels easy
- Print custom pipe markers, voltage markers, signs, bin markers and network identification labels on demand
- Available in a variety of colors, widths, and adhesive materials including continuous polyolefin, polyester, and vinyl
- For flat label applications only



| Part Number    | Part Description  | Height |       | Length |     | Std. Pkg. Qty. | Std. Ctn. Qty. |
|----------------|---|--------|-------|--------|-----|----------------|----------------|
|                |   | In.    | mm    | Ft.    | m   |                |                |
| T019X000FJC-BK | Black on white, polyolefin MINI-COM® Module label tape. | .19    | 4.83  | 25.0   | 7.6 | 1              | 10             |
| T038X000VPC-BK | Black on white, vinyl tape.                             | .38    | 9.65  | 25.0   | 7.6 | 1              | 10             |
| T038X000VYC-WH | White on black, vinyl tape.                             | .38    | 9.65  | 25.0   | 7.6 | 1              | 10             |
| T038X000YKC-BK | Black on clear, polyester tape.                         | .38    | 9.65  | 25.0   | 7.6 | 1              | 10             |
| T050X000VPC-BK | Black on white, vinyl tape.                             | .50    | 12.70 | 25.0   | 7.6 | 1              | 10             |
| T050X000VQC-BK | Black on blue, vinyl tape.                              | .50    | 12.70 | 25.0   | 7.6 | 1              | 10             |
| T050X000VQC-WH | White on blue, vinyl tape.                              | .50    | 12.70 | 25.0   | 7.6 | 1              | 10             |
| T050X000VSC-BK | Black on green, vinyl tape.                             | .50    | 12.70 | 25.0   | 7.6 | 1              | 10             |
| T050X000VSC-WH | White on green, vinyl tape.                             | .50    | 12.70 | 25.0   | 7.6 | 1              | 10             |
| T050X000VUC-BK | Black on orange, vinyl tape.                            | .50    | 12.70 | 25.0   | 7.6 | 1              | 10             |
| T050X000VWC-BK | Black on red, vinyl tape.                               | .50    | 12.70 | 25.0   | 7.6 | 1              | 10             |
| T050X000VWC-WH | White on red, vinyl tape.                               | .50    | 12.70 | 25.0   | 7.6 | 1              | 10             |
| T050X000VXC-BK | Black on yellow, vinyl tape.                            | .50    | 12.70 | 25.0   | 7.6 | 1              | 10             |
| T050X000VYC-WH | White on black, vinyl tape.                             | .50    | 12.70 | 25.0   | 7.6 | 1              | 10             |
| T050X000YKC-BK | Black on clear, polyester tape.                         | .50    | 12.70 | 25.0   | 7.6 | 1              | 10             |
| T050X000YKC-WH | White on clear, polyester tape.                         | .50    | 12.70 | 25.0   | 7.6 | 1              | 10             |
| T075X000VPC-BK | Black on white, vinyl tape.                             | .75    | 19.05 | 25.0   | 7.6 | 1              | 10             |
| T075X000YKC-BK | Black on clear, polyester tape.                         | .75    | 19.05 | 25.0   | 7.6 | 1              | 10             |
| T100X000VPC-BK | Black on white, vinyl tape.                             | 1.00   | 25.40 | 25.0   | 7.6 | 1              | 10             |
| T100X000VQC-BK | Black on blue, vinyl tape.                              | 1.00   | 25.40 | 25.0   | 7.6 | 1              | 10             |
| T100X000VQC-WH | White on blue, vinyl tape.                              | 1.00   | 25.40 | 25.0   | 7.6 | 1              | 10             |
| T100X000VSC-BK | Black on green, vinyl tape.                             | 1.00   | 25.40 | 25.0   | 7.6 | 1              | 10             |
| T100X000VSC-WH | White on green, vinyl tape.                             | 1.00   | 25.40 | 25.0   | 7.6 | 1              | 10             |
| T100X000VUC-BK | Black on orange, vinyl tape.                            | 1.00   | 25.40 | 25.0   | 7.6 | 1              | 10             |
| T100X000VUC-WH | White on orange, vinyl tape.                            | 1.00   | 25.40 | 25.0   | 7.6 | 1              | 10             |
| T100X000VWC-BK | Black on red, vinyl tape.                               | 1.00   | 25.40 | 25.0   | 7.6 | 1              | 10             |
| T100X000VWC-WH | White on red, vinyl tape.                               | 1.00   | 25.40 | 25.0   | 7.6 | 1              | 10             |
| T100X000VXC-BK | Black on yellow, vinyl tape.                            | 1.00   | 25.40 | 25.0   | 7.6 | 1              | 10             |
| T100X000VXC-WH | White on yellow, vinyl tape.                            | 1.00   | 25.40 | 25.0   | 7.6 | 1              | 10             |
| T100X000VYC-WH | White on black, vinyl tape.                             | 1.00   | 25.40 | 25.0   | 7.6 | 1              | 10             |
| T100X000YKC-BK | Black on clear, polyester tape.                         | 1.00   | 25.40 | 25.0   | 7.6 | 1              | 10             |
| T100X000YKC-WH | White on clear, polyester tape.                         | 1.00   | 25.40 | 25.0   | 7.6 | 1              | 10             |

**Material Selection Guide**

| Material Type   | Temperature Range                  | Description  | Color(s)   | Outdoor Rated | UL Recognized | RoHS Compliant‡ |
|---|------------------------------------|--|--|---------------|---------------|-----------------|
| Heat Shrinkable Polyolefin, Non-Adhesive <sup>^</sup> | -67°F to 275°F<br>(-55°C to 135°C) | Polyolefin heat shrink for wire and cable marking applications.  | White<br>Yellow  | Yes           | UL 224        | Yes             |
| Polyester, Adhesive                                   | -40°F to 257°F<br>(-40°C to 125°C) | General purpose material for component labeling; does not stretch or easily tear.  | Clear  | Yes           | UL 969        | Yes             |
|   |                                    |  | Silver   | Yes           | UL 969        | Yes             |
|   |                                    |  | White  | Yes           | UL 969        | Yes             |
| Polyester, Non-Adhesive                               | -10°F to 150°F<br>(-23°C to 66°C)  | Non-adhesive material ideal for network systems labeling; provides durability, high temperature resistance, and dimensional stability. | White  | Yes           | No            | Yes             |
| Polyolefin, Adhesive                                  | -50°F to 120°F<br>(-46°C to 49°C)  | Durable, pliable material with permanent adhesive for terminal block and network component labels.                                     | White  | No            | UL 969        | Yes             |
| Self-Laminating Vinyl, Adhesive                       | -40°F to 150°F<br>(-40°C to 66°C)  | Self-laminating film for most general wire and cable labeling; conformable material.   | White<br>Blue<br>Green<br>Red<br>Yellow<br>Print-On        | Yes           | UL 969        | Yes             |
| Vinyl Cloth, Adhesive                                 | -50°F to 170°F<br>(-46°C to 77°C)  | General purpose material, vinyl impregnated cloth resists oil and abrasion; material can be removed, repositioned, and reused.         | White  | No            | UL 969        | Yes             |
| Vinyl, Adhesive                                       | -40°F to 176°F<br>(-40°C to 80°C)  | General purpose material for pipe marking, bin marking, and facility identification; conformable material for flat applications.       | White<br>Black<br>Blue<br>Green<br>Orange<br>Red<br>Yellow | Yes           | UL 969        | Yes             |

<sup>^</sup>Product meets print performance requirements of MIL-M-81531 and MIL-STD-202F Method 215A, Solution A, C, and D.  
<sup>‡</sup>Material is RoHS compliant per European Directive 2002/95/EC on the Restriction of Hazardous Substances (RoHS).

**Related Products**

**EASY-MARK™ Labeling Software**



PROG-EMCD3

- EASY-MARK™ Labeling Software simplifies label creation for the specific needs of your applications
- Instructions and user interface are available in English, French, German, Italian, Spanish, Korean, Chinese and Portuguese
- Intuitive interview process allows automatic generation of compliant labels and signs
- Software selects and formats the optimum label for your specific project
- **WYSIWYG** (What You See Is What You Get) user interface, alpha/numeric serialization, data import, symbol import

**System Requirements:**

WINDOWS^ 2000, WINDOWS^ NT4.x, WINDOWS^ XP or WINDOWS^ Vista; 64MB hard drive space and 64 MB RAM (256MB RAM Recommended)

<sup>^</sup>WINDOWS is a registered trademarks of Microsoft Corporation in the United States and/or other countries.

WORLDWIDE SUBSIDIARIES AND SALES OFFICES

PANDUIT CANADA  
Markham, Ontario  
cs-cdn@panduit.com  
Phone: 800.777.3300

PANDUIT EUROPE LTD.  
London, UK  
cs-emea@panduit.com  
Phone: 44.20.8601.7200

PANDUIT SINGAPORE PTE. LTD.  
Republic of Singapore  
cs-ap@panduit.com  
Phone: 65.6305.7575

PANDUIT JAPAN  
Tokyo, Japan  
cs-japan@panduit.com  
Phone: 81.3.3767.7011

PANDUIT LATIN AMERICA  
Jalisco, Mexico  
cs-la@panduit.com  
Phone: 52.333.777.6000

PANDUIT AUSTRALIA PTY. LTD.  
Victoria, Australia  
cs-aus@panduit.com  
Phone: 61.3.9794.9020

For a copy of PANDUIT product warranties, log on to [www.panduit.com/warranty](http://www.panduit.com/warranty)



For more information  
Visit us at [www.panduit.com](http://www.panduit.com)

Contact Customer Service by email: [cs@panduit.com](mailto:cs@panduit.com)  
or by phone: 800-777-3300 and reference IDCB41

©2007 PANDUIT Corp.  
ALL RIGHTS RESERVED.  
Printed in U.S.A.  
Replaces SA-IDCB22  
Product Bulletin Number SA-IDCB41  
9/2007